

PART OF SECTIONS 11,12,13,14, T.6N., R.3E., S.L.B. & M.  
**CAUSEY ESTATES SUBDIVISION NO. 3**

LOTS 141-145

IN WEBER COUNTY

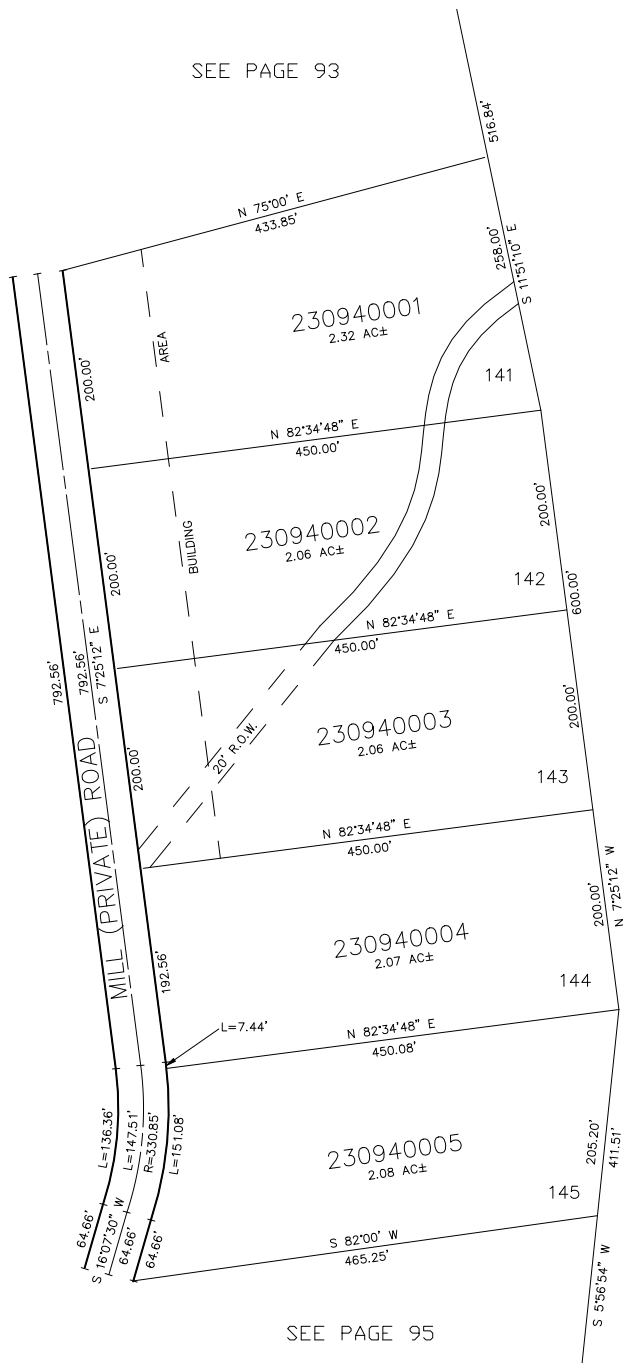
SCALE 1" = 100'

TAXING UNIT: 58

SEE PAGE 88

SEE PAGE 93

SEE PAGE 88



FOR COMPLETE ENG DATA SEE  
 ORIGINAL DEDICATION PLAT IN  
 BOOK 24, PAGES 38,39,40 OF RECORDS.